

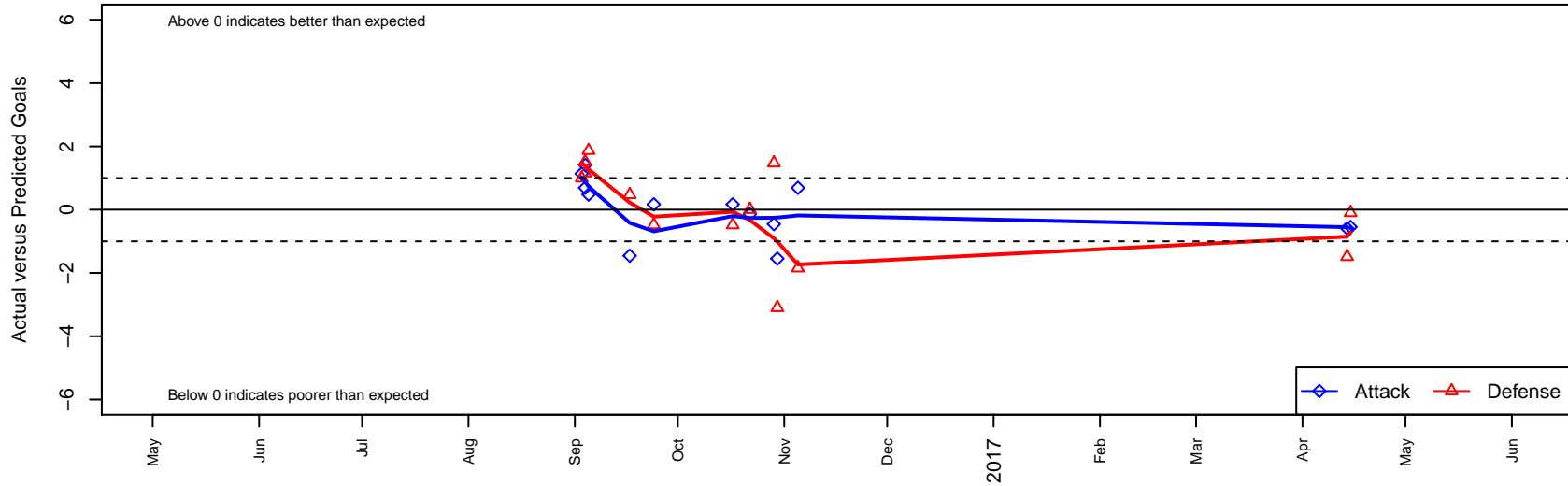
Coquitlam Metro Ford Shakhtar B02

Coquitlam Metro Ford SC
 , BC
 B02 total strength=1530
 attack=13.35 defense=11.77
 fall league = BCSPL 2002 U14
 notes= CMFSC

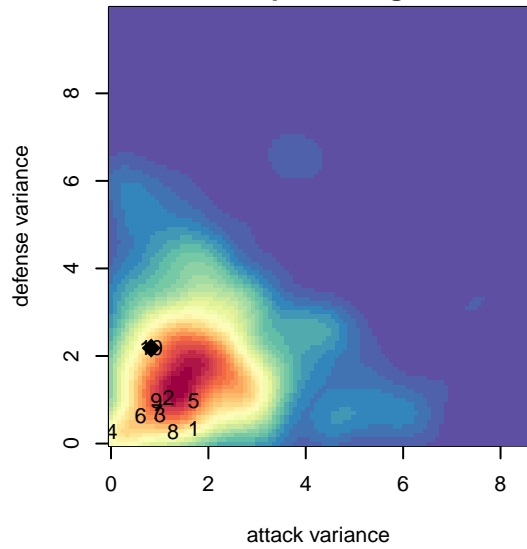
alt names used:
 CMFSC SHAKHTAR (CANADA)
 Coquitlam Metro–Ford SC
 Coquitlam Metro Ford Shakhtar

Venues played:
 2016 SX Cup U15 Premier – Tier 1 U15
 2016 BCSPL 2002 U14
 2016 Whitecaps Invitational U15

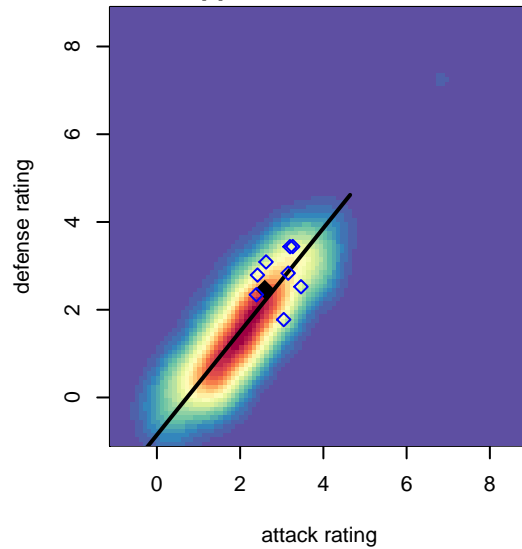
Coquitlam Metro Ford Shakhtar B02
 Dots are actual minus expected GF (blue circles) and GA (red triangles).
 Blue line is smoothed change in attack strength. Red is smoothed change in defense strength.



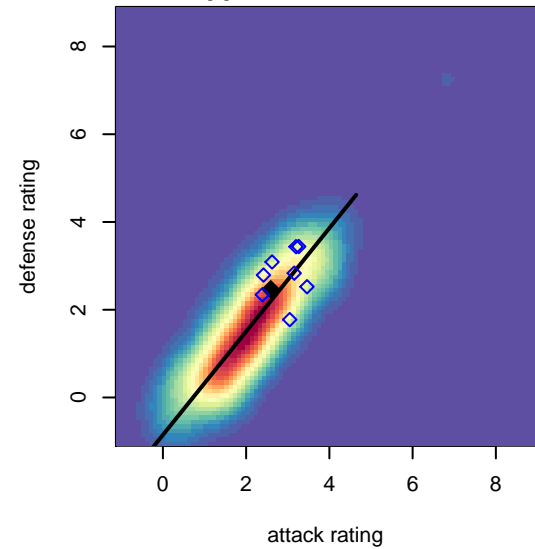
**attack and defense variance (black dot)
relative to other teams
and top 10 in region**



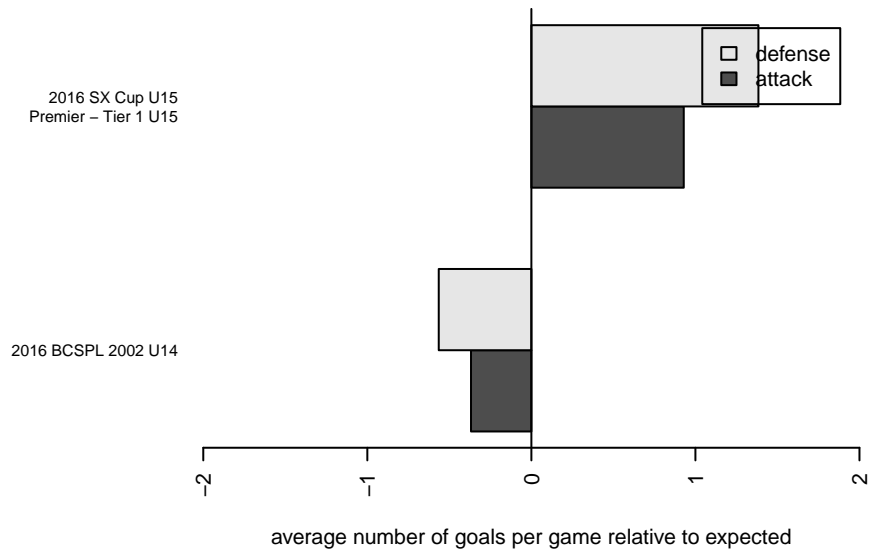
**attack and defense rating
relative to others at age
and all opponents in last 13 months**



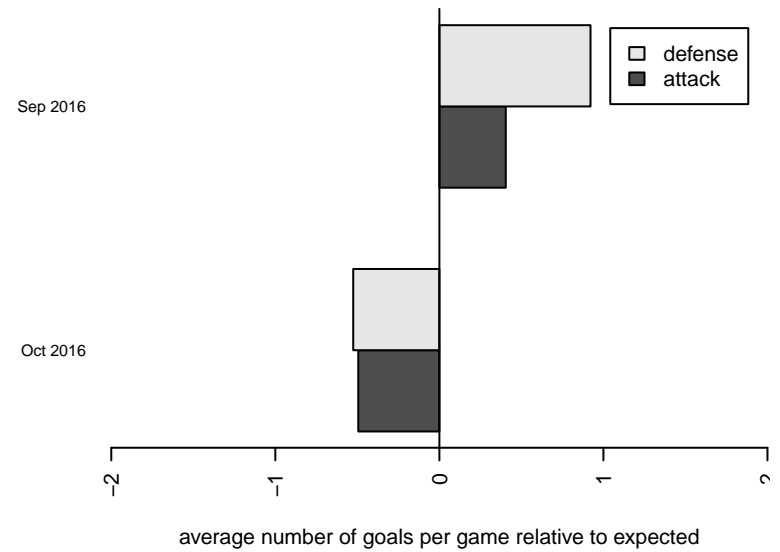
**attack and defense rating
relative to others at age
and all opponents in last 13 months**



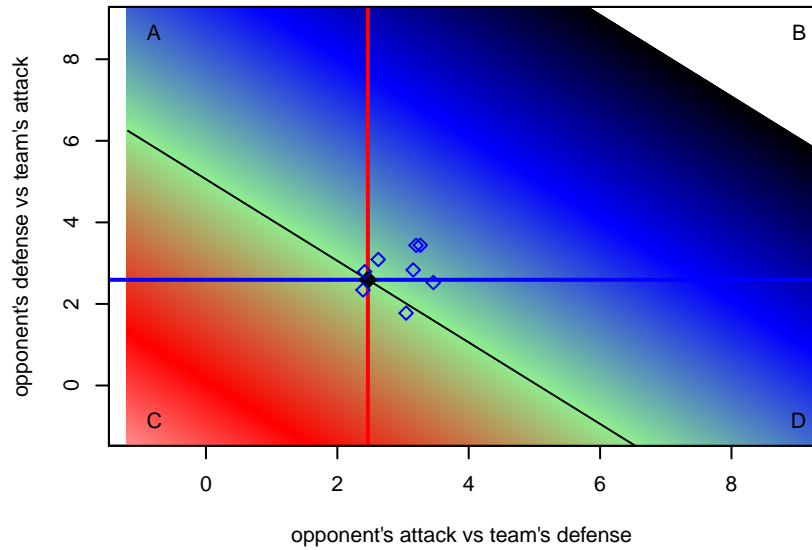
Performance relative to 13 month average



Performance relative to 13 month average



Distribution of opponents
 Red = Lose zone, Blue = Win zone, Green = Even
 Black line separates win/lose zones



lot. A=Neither has attack advantage, B=Opponent has both attack and defense advantage, C=Opponent has both attack and defense disadvantage, D=Both have

| date | home | | away | | venue | pred.home | pred.away |
|-------------|-----------------------------------|---|-----------------------------------|---|--------------------------------------|------------------|------------------|
| 2017-04-15 | Thompson Okanagan FC B02 | 1 | Coquitlam Metro Ford Shakhtar B02 | 1 | 2016 Whitecaps Invitational U15 | 0.90 | 1.55 |
| 2017-04-14 | Fusion FC B02 | 3 | Coquitlam Metro Ford Shakhtar B02 | 0 | 2016 Whitecaps Invitational U15 | 1.51 | 0.59 |
| 2016-11-05 | Coquitlam Metro Ford Shakhtar B02 | 2 | Surrey United B02 | 4 | 2016 BCSPL 2002 U14 | 1.31 | 2.16 |
| 2016-10-30 | Coquitlam Metro Ford Shakhtar B02 | 0 | Thompson Okanagan FC B02 | 4 | 2016 BCSPL 2002 U14 | 1.55 | 0.90 |
| 2016-10-29 | Coquitlam Metro Ford Shakhtar B02 | 2 | Coastal FC B02 | 0 | 2016 BCSPL 2002 U14 | 2.46 | 1.47 |
| 2016-10-22 | Coquitlam Metro Ford Shakhtar B02 | 1 | Vancouver Island Wave B02 | 1 | 2016 BCSPL 2002 U14 | 1.14 | 1.01 |
| 2016-10-17 | Fraser Valley Selects B02 | 2 | Coquitlam Metro Ford Shakhtar B02 | 1 | 2016 BCSPL 2002 U14 | 1.52 | 0.83 |
| 2016-09-24 | Coquitlam Metro Ford Shakhtar B02 | 1 | Fraser Valley Selects B02 | 2 | 2016 BCSPL 2002 U14 | 0.83 | 1.52 |
| 2016-09-17 | Coastal FC B02 | 1 | Coquitlam Metro Ford Shakhtar B02 | 1 | 2016 BCSPL 2002 U14 | 1.47 | 2.46 |
| 2016-09-05 | Seattle United Copa B02 | 0 | Coquitlam Metro Ford Shakhtar B02 | 1 | 2016 SX Cup U15 Premier – Tier 1 U15 | 1.87 | 0.52 |
| 2016-09-04 | Fusion FC B02 | 0 | Coquitlam Metro Ford Shakhtar B02 | 2 | 2016 SX Cup U15 Premier – Tier 1 U15 | 1.51 | 0.59 |
| 2016-09-04 | Surrey United B02 | 1 | Coquitlam Metro Ford Shakhtar B02 | 2 | 2016 SX Cup U15 Premier – Tier 1 U15 | 2.16 | 1.31 |
| 2016-09-03 | Mountain United B02 | 0 | Coquitlam Metro Ford Shakhtar B02 | 2 | 2016 SX Cup U15 Premier – Tier 1 U15 | 1.00 | 0.86 |